

SPECIFICATION

ANALYSIS

RANGE

UNITS

DYE STRENGTH (compared to standard)

100 ± 5

%

Absorbance wavelength maxima at 650 ± 3 nm

Method of test: Spectrophotometer

Standard product when measured at 5 mg/L in toluene, in a 10 mm glass cell, has an absorbance of 0.245 au at approx. 650 nm.

WATER CONTENT

≤ 1.0

%m/m

Method of test: Karl Fischer

INSOLUBLES CONTENT

≤ 0.7

%m/m

Method of test: John Hogg QD1006

Above parameters to be quoted on a certificate of analysis if required.

TYPICAL USE AND APPLICATION:

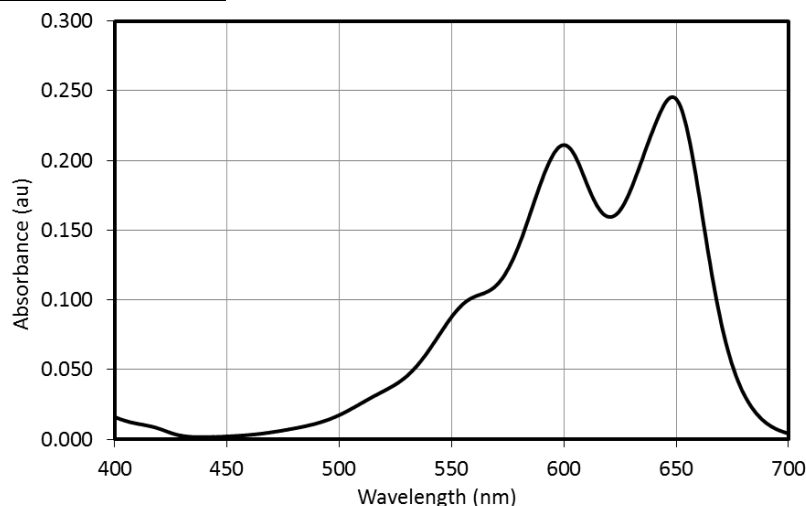
This product can be used for the colouration of petroleum products, mineral oils, aliphatic and aromatic hydrocarbon solvents and fuels.

The end user of the dye is responsible for testing the product to ensure it is suitable for the intended application.

APPEARANCE

SUDAN® BLUE 670 is an odourless dark blue crystalline powder. It is not miscible with water.

SPECTRAL CURVE



SHELF LIFE AND STORAGE CONDITION

This product has unlimited stability when properly stored in a closed container between 5°C and 40°C.

The product should always be stored away from excessive heat sources, direct sunlight or ignition sources. Storage and handling of this product outside the above stated conditions may compromise the product quality.

HEALTH & SAFETY

Health and Safety data on this product is available and includes information on handling, storage etc.

DISCLAIMER

THE INFORMATION CONTAINED HEREIN IS TO THE BEST OF OUR KNOWLEDGE AND BELIEF, ACCURATE. HOWEVER, SINCE THE CONDITIONS OF HANDLING AND OF USE ARE BEYOND OUR CONTROL, WE MAKE NO GUARANTEE OF RESULTS AND ASSUME NO LIABILITY FOR DAMAGES INCURRED BY FOLLOWING THESE SUGGESTIONS. NOTHING CONTAINED HEREIN IS TO BE CONSTRUED AS A RECOMMENDATION FOR USE IN VIOLATION OF ANY PATENTS OR OF APPLICABLE LAWS OR REGULATIONS. © 2019 JOHN HOGG TECHNICAL SOLUTIONS LTD, ALL RIGHTS RESERVED

